

JUMO GmbH & Co. KG
 Delivery address: Mackenrodtstraße 14,
 36039 Fulda, Germany
 Postal address: 36035 Fulda, Germany
 Phone: +49 661 6003-0
 Fax: +49 661 6003-607
 E-mail: mail@jumo.net
 Internet: www.jumo.net

JUMO Instrument Co. Ltd.
 JUMO House
 Temple Bank, Riverway
 Harlow - Essex CM20 2DY, UK
 Phone: +44 1279 63 55 33
 Fax: +44 1279 63 52 62
 E-mail: sales@jumo.co.uk
 Internet: www.jumo.co.uk

JUMO Process Control, Inc.
 8 Technology Boulevard
 Canastota, NY 13032, USA
 Phone: 315-697-JUMO
 1-800-554-JUMO
 Fax: 315-697-5867
 E-mail: info@jumo.us
 Internet: www.jumo.us



Pressure Transmitter

JUMO dTRANS p30

Type 404366

General application

Pressure transmitters are used to measure the relative (gauge) and absolute pressures in liquids or gases. The measuring device for the transmitter is a piezo-resistive element or a thin-film strain gauge. The pressure is converted into an electrical signal.

Technical data

Reference conditions

as per DIN 16 086 and IEC 770/5.3

Ranges

see order details

Overload limit

ranges

0 – 25 bar 3 x full scale

ranges

0 – 40 to 0 – 250 bar 2 x full scale

ranges

0 – 400 to 0 – 600 bar 1.5 full scale

Bursting pressure

ranges

0 – 40 bar ≤ 4 x full scale

ranges

0 – 60 to 0 – 100 bar 8 x full scale

ranges

0 – 160 to 0 – 400 bar 5 x full scale

ranges

0 – 600 bar 3 x full scale

Parts in contact with medium

normally:

st. steel, Mat. Ref. 1.4571 / 1.4435

for range ≥ 60 bar:

Mat. Ref. 1.4571 / 1.4542

Output

0 – 20 mA

3-wire burden ≤ (U_B-12 V) / 0.02A

4 – 20 mA

2-wire burden ≤ (U_B-10 V) / 0.02A

4 – 20 mA

3-wire burden ≤ (U_B-12 V) / 0.02A

0.5 – 4.5 V burden ≥ 50 kΩ

1 – 6 V burden ≥ 10 kΩ

0 – 10 V burden ≥ 10 kΩ

Burden error

0.5% max.

Zero offset

≤ 0.3% of full scale

Thermal hysteresis

± 0.5% max. of full scale

(within compensated temperature range)

± 1% max. for ranges 0 – 250 mbar

0 – 400 mbar

0 – 600 mbar

Ambient temperature error

within range 0 to +100°C

(compensated temperature range)

for ranges 250 and 400 mbar

zero: ≤ 0.03%/°C typical,

≤ 0.05%/°C max.

span: ≤ 0.02%/°C typical,

≤ 0.04%/°C max.

for ranges above 600 mbar

zero: ≤ 0.02%/°C typical,

≤ 0.04%/°C max.

span: ≤ 0.02%/°C typical,

≤ 0.04%/°C max.

with basic type extension 024:

zero: ≤ 0.01%/°C

Deviation from characteristic

≤ 0.5% of full scale

(limit point adjustment)

with basic type extension 023:

≤ 0.2% of full scale

(limit point setting)

Hysteresis

≤ 0.1% of full scale

Repeatability

≤ 0.05% of full scale

Response time

with current output (output 402, 405 or

406):

≤ 3 msec max.

with voltage output (output 412, 415, 418

or 420):

≤ 10 msec max.

Stability per year

≤ 0.5% of full scale



Supply

10 – 30 V DC (output 4 – 20 mA and 1 – 6 V)

5 V DC (output 0.5 – 4.5 V)

11.5 – 30 V DC (output 0 – 10 V)

11.5 – 30 V DC (output 0(4) – 20 mA)

Ripple: the voltage spikes must not go above or below the values specified for the supply

max. current drawn: approx. 25 mA

Supply voltage error

≤ 0.02% per V

(nominal supply voltage 24 V DC)

in proportion for supply 5 V DC (±0.5 V)

Permissible ambient temperature

-20 to +100°C

Storage temperature

-40 to +125°C

Permissible temperature of medium

-30 to +120°C

Electromagnetic compatibility

EN 61 326

interference emission: Class B

noise immunity: industrial requirements

Mechanical shock

(to IEC 68-2-27)

100 g/1 msec

Mechanical vibration

(to IEC 68-2-6)

20 g max. at 15 – 2000 Hz

Protection

with terminal box

IP65 to EN 60 529

(connecting cable diameter 5 mm min., 7 mm max.)

with connecting cable

IP67 to EN 60 529

with circular connector M12 x 1

P67 to EN 60 529

Housing

stainless steel, Mat. Ref. 1.4301
polycarbonate GF

Pressure connection

see order details;
other connections on request

Electrical connection

see order details
terminal box to DIN 43 650,
Form A,
conductor cross-section up to 1.5 mm²;
or
attached 4-core PVC cable, length 2 m
other lengths on request

Nominal position

unrestricted

Weight

200 g

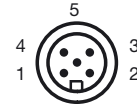
Electrical connection

Connection		Terminals		
		Plug	Cable	M12 x 1
Supply 10 – 30 V DC 11.5 – 30 V DC 5 V DC		1 L+ 2 L-	white grey	1+ 3-
Output 1 – 6 V 0 – 10 V 0.5 – 4.5 V		2 - 3 +	grey yellow	3- 4+
Output 4 – 20 mA, 2-wire		1 + 2 -	white grey proportional current 4 to 20 mA in supply	1+ 3-
Output 0(4) – 20 mA, 3-wire		2 - 3 +	grey yellow	3- 4+
Protective earth				
Screen			black	2

Caution

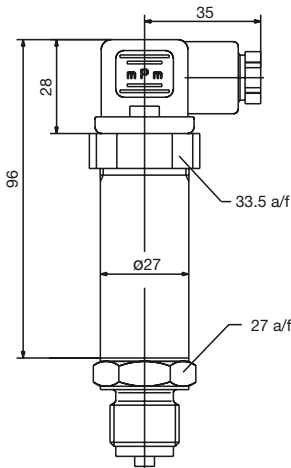
Earth instrument!
(pressure connection and / or or screen)

Pin assignment M12 x 1

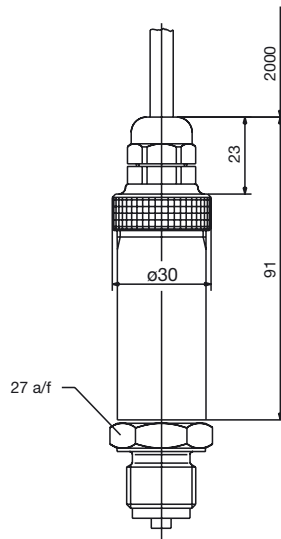


Dimensions

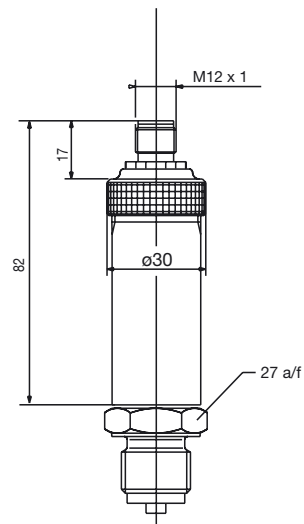
Electrical connection
with terminal box
(61)



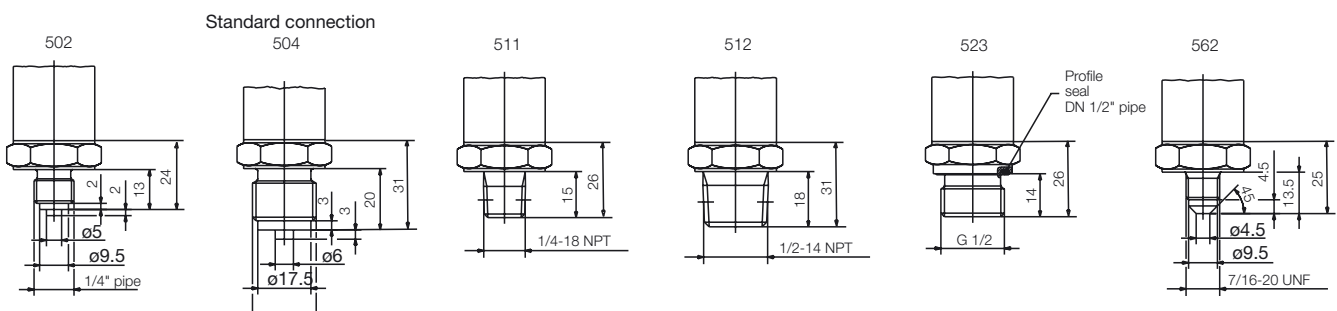
Electrical connection
with attached cable
(12)



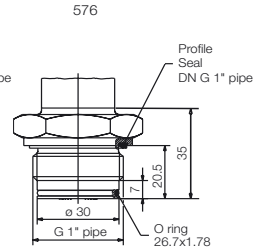
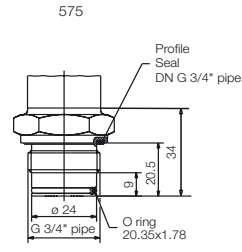
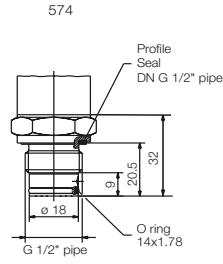
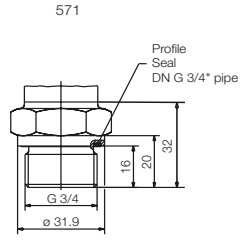
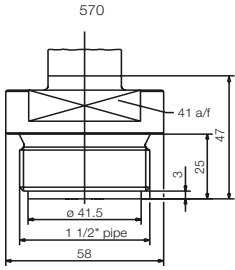
Electrical connection
with circular connector M12 x 1
(36)



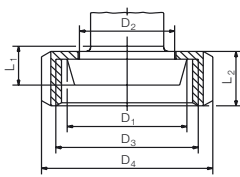
Connections (not front-flush)



Front-flush connections

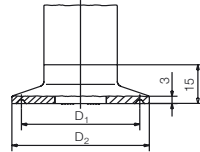


603-607
Cone nipple with slotted union nut to DIN 11 851



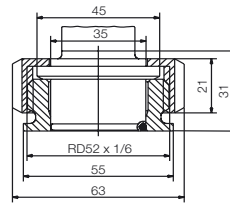
	DN	øD ₁	øD ₂	øD ₃	øD ₄	L ₁	L ₂
	603	20	36.5	30	RD 44x1/6	54	13
	604	25	44	35	RD 52x1/6	63	21
	605	32	50	41	RD 58x1/6	70	
	606	40	56	48	RD 65x1/6	78	
	607	50	68.5	61	RD 78x1/6	92	

612-616
Clamp connection to DIN 32676

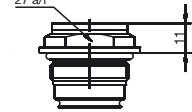


	DN DIN 32676	DN (Zoll)	Nominal Size ISO 2852	øD ₁	øD ₂
612	20	1.5"	12	27.5	34
	15		12.7		
			17.2		
613	25	2"	25	43.5	50.5
	32		33.7		
	40		38		
616	50	2.5"	40	56.5	64
			51		

652



997
Suitable for the JUMO PEKA adapter system, see data sheet 40.9711



Order details

Basic type

404366 Pressure transmitter JUMO dTRANS p30

		Basic type extensions
	/000	none
	/023	reduced deviation from characteristic ¹
	/024	reduced ambient temperature error ²
	/999	special version
		Input
		451 0 – 0.25 bar gauge pressure
		452 0 – 0.4 bar gauge pressure
		453 0 – 0.6 bar gauge pressure
		454 0 – 1.0 bar gauge pressure
		455 0 – 1.6 bar gauge pressure
		456 0 – 2.5 bar gauge pressure
		457 0 – 4 bar gauge pressure
		458 0 – 6 bar gauge pressure
		459 0 – 10 bar gauge pressure
		460 0 – 16 bar gauge pressure
		461 0 – 25 bar gauge pressure
		462 0 – 40 bar gauge pressure
		463 0 – 60 bar gauge pressure
		464 0 – 100 bar gauge pressure
		465 0 – 160 bar gauge pressure
		466 0 – 250 bar gauge pressure
		467 0 – 400 bar gauge pressure
		468 0 – 600 bar gauge pressure
		478 -1 – 0 bar gauge pressure
		479 -1 – 0.6 bar gauge pressure
		480 -1 – 1.5 bar gauge pressure
		481 -1 – 3 bar gauge pressure
		482 -1 – 5 bar gauge pressure
		483 -1 – 9 bar gauge pressure
		484 -1 – 15 bar gauge pressure
		485 -1 – 24 bar gauge pressure
		487 0 – 0.6 bar absolute pressure
		488 0 – 1.0 bar absolute pressure
		489 0 – 1.6 bar absolute pressure
		490 0 – 2.5 bar absolute pressure
		491 0 – 4 bar absolute pressure
		492 0 – 6 bar absolute pressure
		493 0 – 10 bar absolute pressure
		494 0 – 16 bar absolute pressure
		495 0 – 25 bar absolute pressure
		998 special range absolute pressure
		999 special range gauge pressure
		Output
		402 0 to 20 mA 3-wire
		405 4 to 20 mA 2-wire
		406 4 to 20 mA 3-wire
		412 0.5 to 4.5 V 3-wire
		415 0 to 10 V 3-wire
		418 1 to 5 V 3-wire
		420 1 to 6 V 3-wire

					Process connection (not front-flush)
				502	1/4" pipe to EN 837
				504	1/2" pipe to EN 837 (standard connection)
				511	1/4"-18 NPT to DIN 837
				512	1/2"-14 NPT to DIN 837
				523	1/2" pipe to DIN 3852 T11
				562	7/16"-20 UNF
				998	suitable for connecting to pressure separator
					Process connection (front-flush)
				570	1 1/2" pipe ⁴
				571	3/4" pipe ⁴
				574	1/2" pipe with front seal ³
				575	3/4" pipe with front seal ⁴
				576	1" pipe with front seal ⁴
				603	taper pressure connection with slotted nut to DIN11 851, DN20 ⁴
				604	taper pressure connection with slotted nut to DIN 11 851, DN25 ⁴
				605	taper pressure connection with slotted nut to DIN 11 851, DN32 ⁴
				606	taper pressure connection with slotted nut to DIN 11 851, DN40 ⁴
				607	taper pressure connection with slotted nut to DIN 11 851, DN50 ⁴
				612	clamp pressure connection to DIN 32 676, DN20 ⁴
				613	clamp pressure connection to DIN 32 676, DN25 ⁴ , DN32 ⁴ and DN40 ⁴
				616	clamp pressure connection to DIN 32 676, DN50 ⁴
				652	tank connection with slotted union nut ⁴
				997	JUMO PEKA ⁶
					Material of process connection
				20	stainless steel
					Electrical connection
				12	with attached cable (cable length in plain text)
				36	with circular connector M12 x 1
				61	with terminal box
					Extra code
				000	none
				591	throttle in pressure duct ⁵
				630	enlarged pressure duct ⁵

404366 / [] - [] - [] - [] - [] - [] / [] **Order code**

¹ only for 4 to 20 mA 2-wire output
 only for ranges between 0.6 and 40 bar
 not with process connection 574.
² only for spans between 4 and 25 bar
 only for output 0 to 10 V or 4 to 20 mA 2-wire or 0(4) to 20 mA 3-wire
 not with process connection 574
³ only for ranges from 1 to 400 bar
⁴ only for ranges up to 25 bar
⁵ only with process connections that are not front-flush
⁶ suitable process connection adapter, see data sheet 40.9711